

COMMUNITY INVOLVEMENT: Coastal Update

Mayor's Office of Environmental Affairs
City Of New Orleans

Background



- The Mayor's Office of Environmental Affairs was established in 1994 to enhance and protect the New Orleans environment for current and future generations.
- The Office seeks to improve quality of life by promoting economic development that benefits the environment and all of our citizens

Current Programs



- Coastal Permitting
- Coastal Restoration

Balance



- Community

 - Private

 - Sports Teams

 - Corporations

 - Small Business

- Community Public

 - Citizens

 - Commuters

 - Visitors

Programs that Assist our Coast



- MRGO Restoration Ecosystem Plan
- CWPPRA
- CIAP

MRGO

Mister Go Isn't Gone Yet

Creating Community and Environmental Resiliency in the Wake
of a Man-Made Catastrophe

A report by the MRGO Must Go Coalition

April 2010



www.MRGOmustGO.org

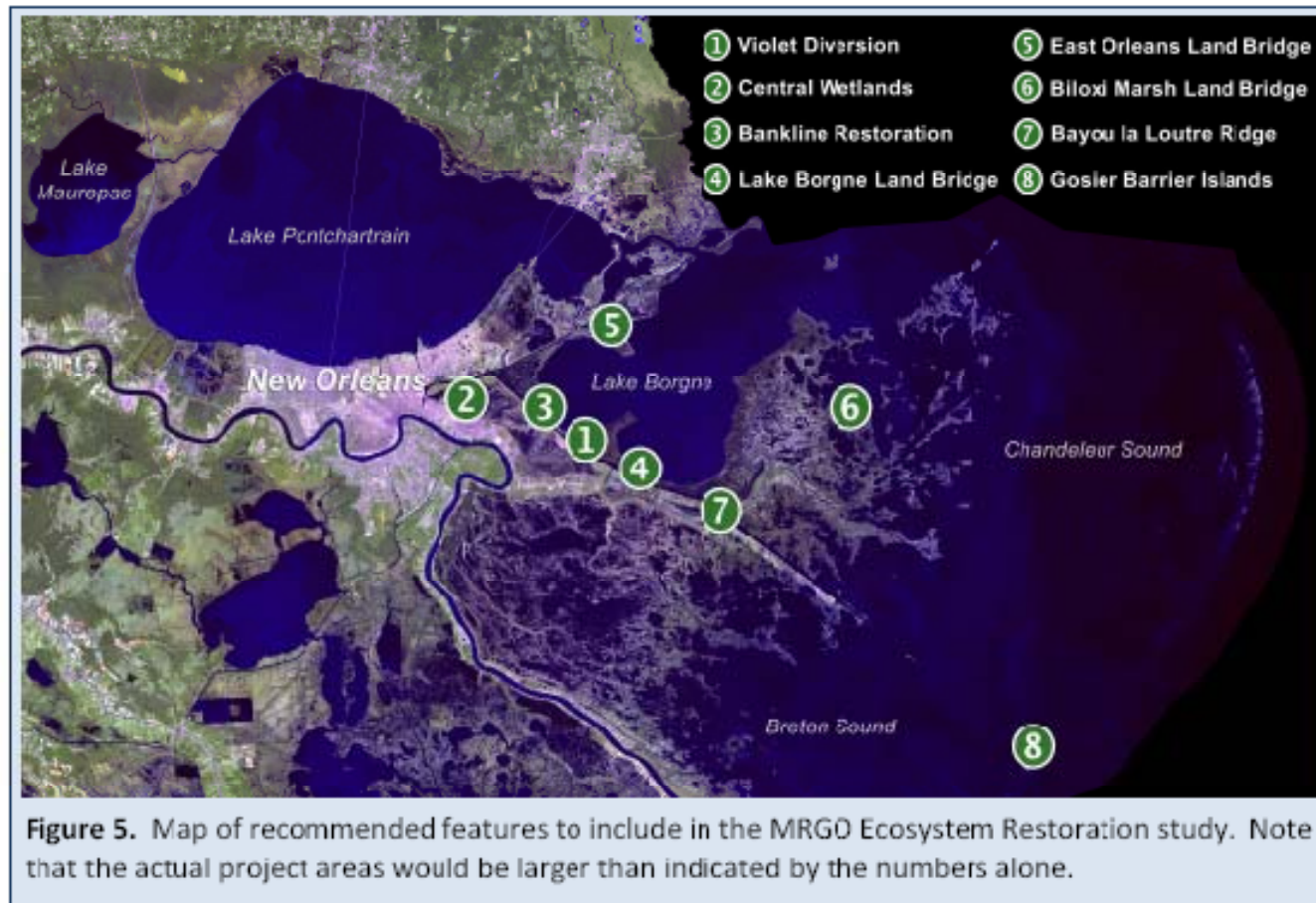
Lead authors:

John Lopez, Lake Pontchartrain Basin Foundation
Amanda Moore, National Wildlife Federation
Juanita Constible, National Wildlife Federation

MRGO

- Central Wetlands Unit Project
 - ▣ Huge Cypress Swamp
 - Saltwater destroyed swamp due to water changes
 - ▣ East Orleans Land Bridge
 - Storm Surge Buffer

MRGO Study



MRGO



Figure 7. Bayou Bienvenue runs along the north end of the Central Wetlands Unit and into the marsh west of Lake Borgne.

Storm Barrier



Figure 4. Aerial view of the partially-completed surge barrier across the MRGO-GIWW tunnel.

However



- Pressure must continue to ensure that the area is restored.
 - Phone calls
 - Letters
 - Monitor progress

CWPPRA

- ❑ Coastal Wetlands Planning, Protection and Restoration Act (Breaux Act)
- ❑ Est 1990 for the use to plan and implement projects in coastal Louisiana.
- ❑ Authorized until 2019.

Process



- Four Regional Planning Teams
- Projects are introduced at each meeting
- Once Coast-Wide PRT voting meeting
- Three projects are selected in each Basin (Terrabonne, Barataria, Ponchartrain)
- Two projects are selected in remaining Basins

Process



- **The Task Force manages the CWPPRA program including project selection and construction is composed of following members:**
- U.S. Army Corps of Engineers Chair, Colonel Al Lee
- U.S. Fish and Wildlife Service Jim Boggs
- Natural Resource Conservation Service Kevin Norton
- Environmental Protection Agency William Honker
- National Marine Fisheries Service Christopher Doley
- The State of Louisiana, Governor's Office, Garret Graves

Next Step



- 10 Candidate Projects will be selected and 3 demo projects will be selected
- Public Support is needed

PPL 20 Unknown Pass to Rigolets Shoreline Protection

- **The proposed features will consist of the construction of a foreshore rock dike (21,085 feet) along the shoreline of Lake Borgne.**
- **Material dredged for access to the shoreline will be beneficially used to create approximately 65 acres of marsh.**
- The estimated construction cost including 25% contingency is \$12,026,080. The fully-funded cost range is \$25M - \$30M

Alligator Bend Project-Funded PPL1



- Marsh Creation & Shoreline Protection
- Project is in the cultural and design phase
- Construction will begin end of 2010
- 20-25M cost
- 330 acres of marsh will be created
- Hydraulic dredge will pump material into site
- Area will be planted to jumpstart plants growth

CIAP



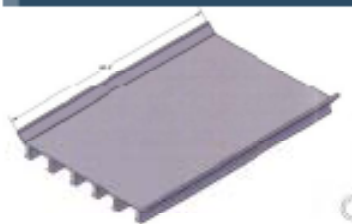
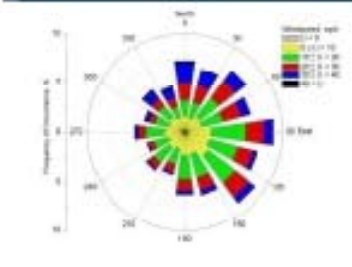
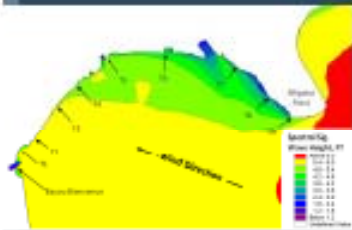
- Coastal Impact Assistance Program
- 2nd Grant
- First Grant funded a Stormwater Study and the Wetland Education Center
- 2nd Study will restore Alligator Bend to Bayou Bienvenue



State of Louisiana Office of Coastal Protection and Restoration



CITY OF NEW ORLEANS
C. Ray Nagin, Mayor



Orleans Landbridge Shoreline Protection (PO-36) 30% Preliminary Design

March 25, 2010

HDR

CIAP



- \$27,200,000 State CIAP
- \$15,095,966 Orleans CIAP
- \$42,295,966 Total Project Cost
- Currently losing 7.7 ft per year since 1978

Project Background

- **Funded by the Coastal Impact Assistance Program**
- **Available Budget of Approximately \$42,000,000**
 - Orleans Parish: 35%
 - OCPR: 65%
- **Originally planned for 10 mi of shoreline protection:**
 - Halt shoreline retreat and marsh loss
 - Prevent further coalescing of open water
 - Reestablish a sustainable lake rim
- **Decision made to opportunistically use debris from demolition of I-10 bridge over Lake Pontchartrain**
 - Approx. 187,000 Tons of reinforced concrete from decks and bents

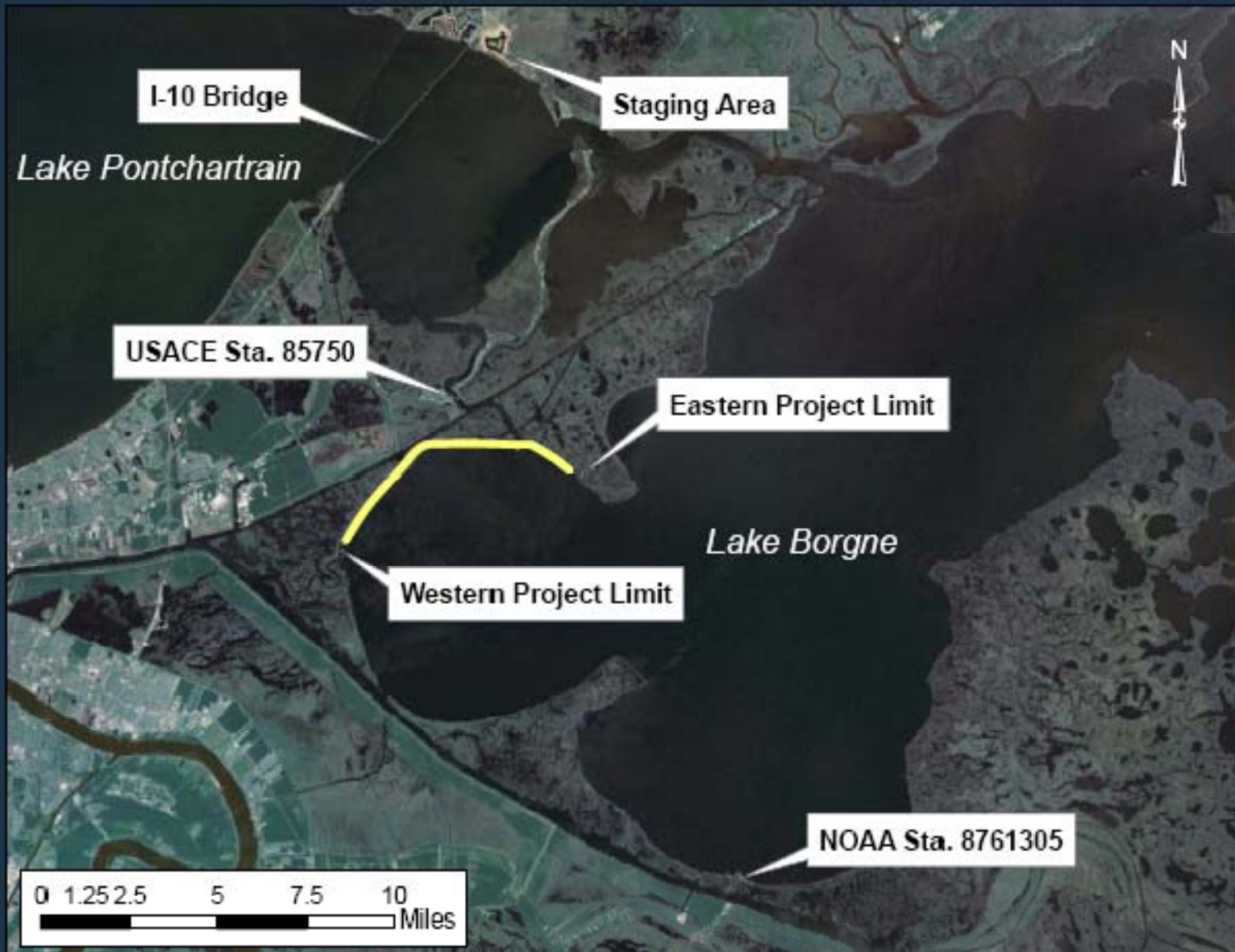


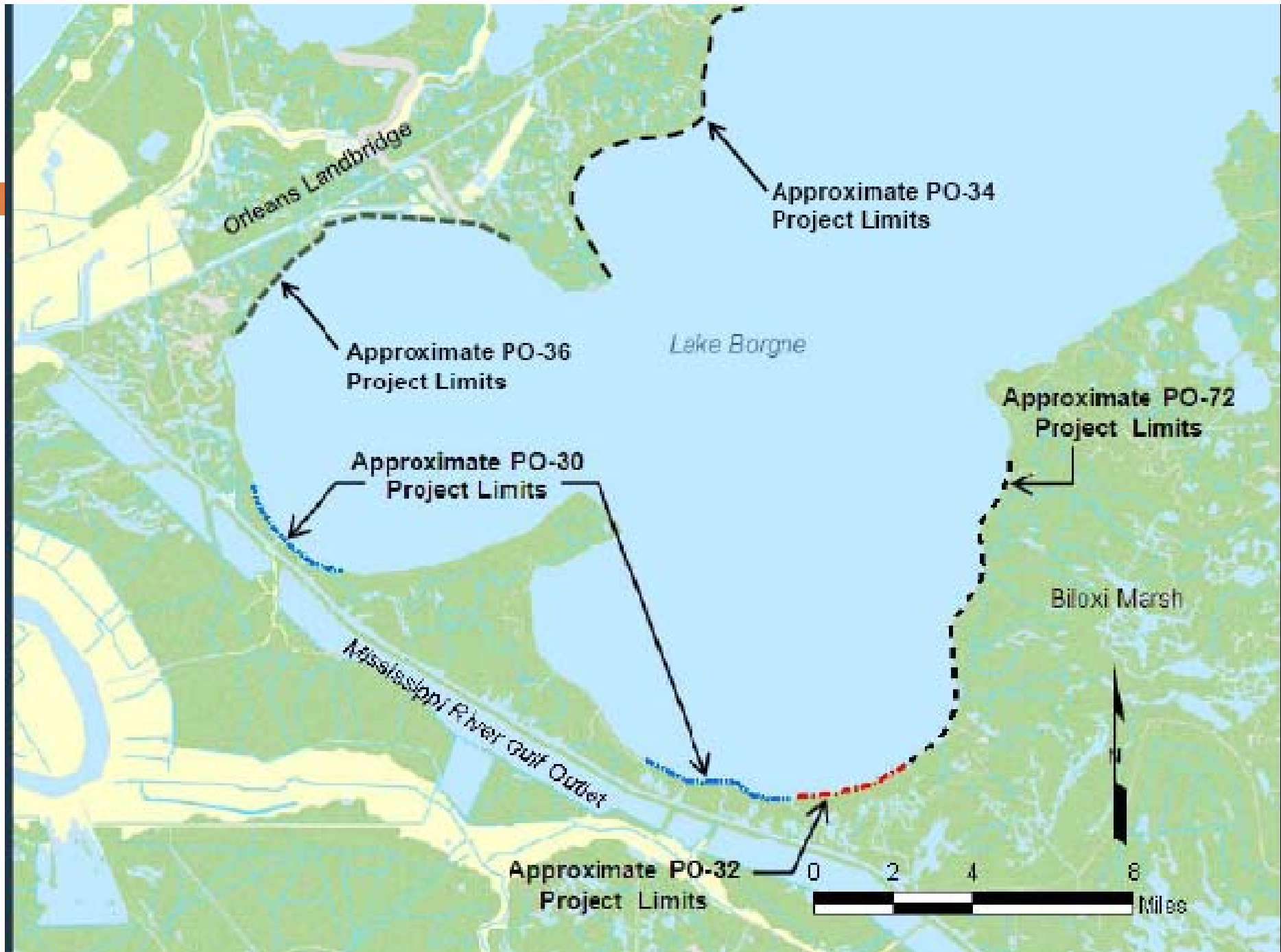
I-10 Twin Span Demolition

- **100% Federally Funded**
 - Public Law to attempt beneficial use of demolished material
- **126 Spans given to LDWF for reef construction in Lake Pontchartrain**
- **63 Spans given to OCPR for shoreline protection at Bayou Sauvage NWR**
- **All remaining spans given to OCPR for Orleans Landbridge Shoreline Protection Project (PO-36)**

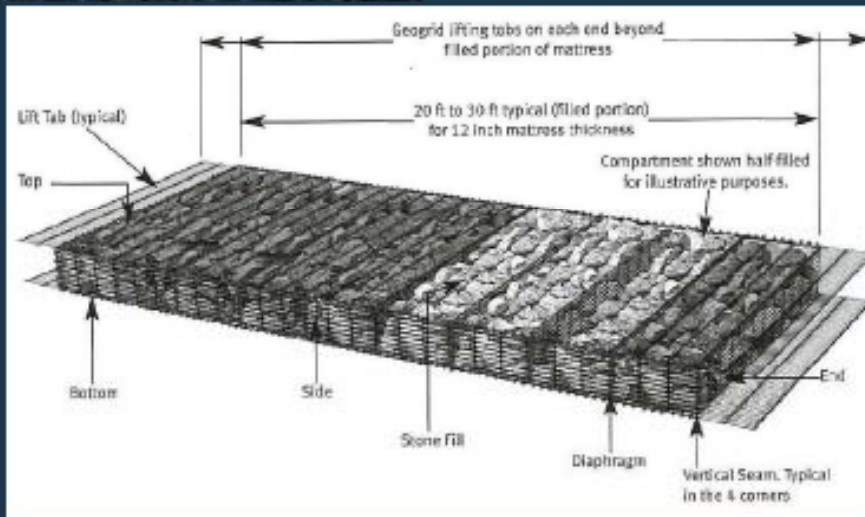


Project Location





30% Design: Marine Mattress Revetment



Goals



- **Educate new advocates and activist**
- **Engage the Community**
- **Integrate into Master Plan**

Educate Advocates



General Definitions



- Pipeline Sediment Delivery
 - ▣ Moves sediment from existing deposits in river beds and offshore.
 - ▣ Targets specific areas of landforms
- Diversion
 - ▣ Reintroduces river water and sediment into wetland areas or open water.
 - ▣ Help reduce salinity in wetland areas.

More Definitions



- Wetlands occur in freshwater, brackish and saltwater habitats.
- In freshwater there's more plant diversity – bottom-land hardwood forest.
- Brackish marsh is found in a combination of fresh and saltwater – Lake Pontchartrain shoreline
 - ▣ More salt than fresh water but not as much as seawater
- Saline marsh is found in saltwater – parts of Lake Borgne shoreline

What are wetlands?



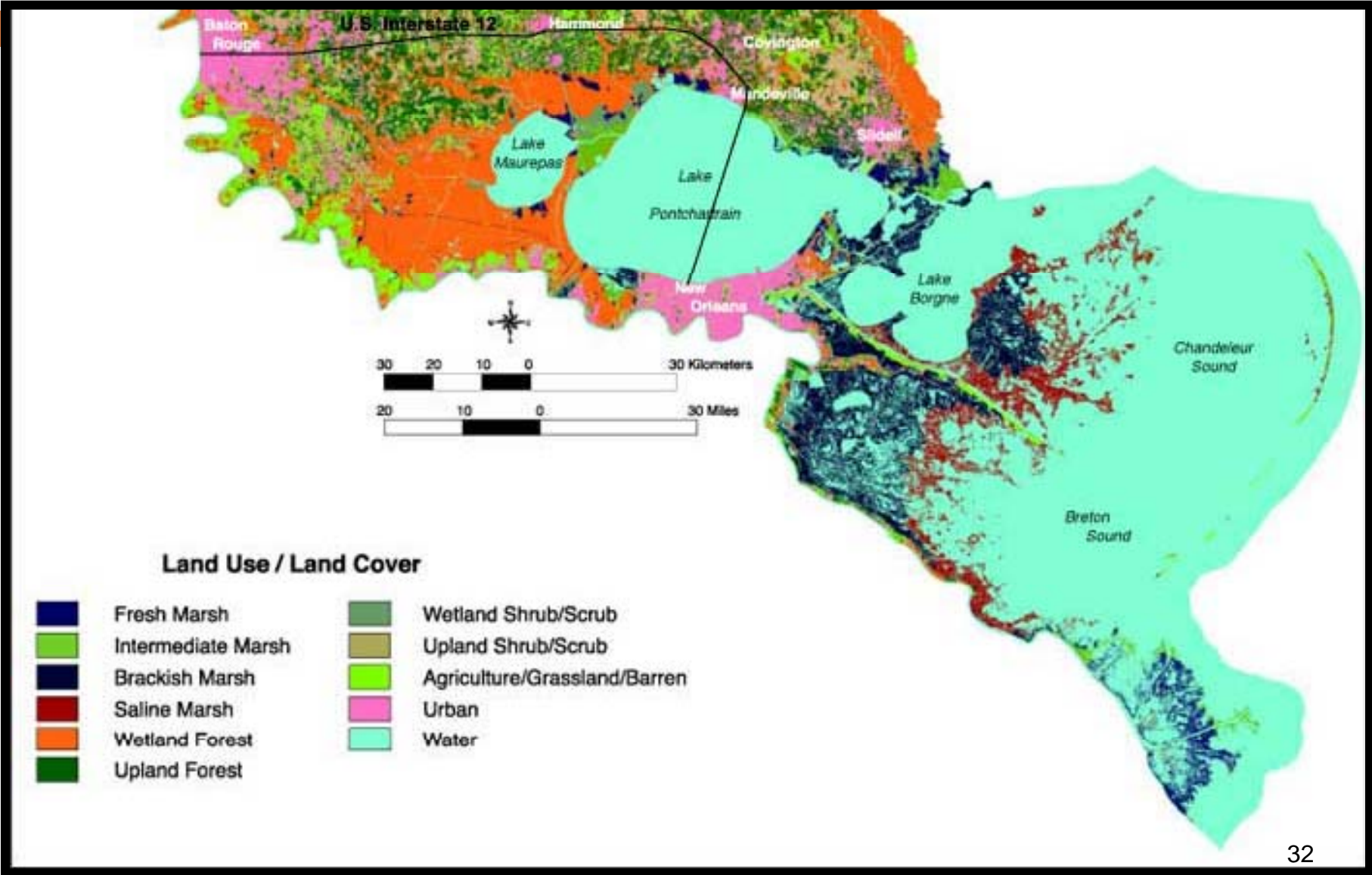
- There are 50 different official definitions of wetlands – thus the constant confusion.
- In general terms, wetlands contain soil that is at least periodically soaking wet or covered by water. The water creates problems for plants and animals to survive except those that are adapted for life in water or in wet soil.
- Wetlands are identified based on the type of soils, plants and water it has and its elevation.

Different kinds of wetlands

- ❑ Wetlands are often called swamps or marshes.
- ❑ A swamp is a forested wetland area with trees, shrubs, vines and grasses.
- ❑ A marsh is a wetland area made up of mostly grasses.



Wetlands in New Orleans



Engage the Community



Question

- ❑ What did you have for lunch?
- ❑ What are you wearing?
- ❑ What do you do with out of town friends and family when they visit?
- ❑ How do you earn a living?
- ❑ Did your property insurance rates go up?
- ❑ Levees are built to protect us from flooding...what protects the levees?

No Wetlands No Seafood Campaign

- Engage local tourism groups in campaign
- Brand concept for NOLA
- Get students involved

Integrate into Master Plan



Why are we losing wetlands?

- This is occurring due to land sinking and the wearing away of soil.
 - ▣ Drained and filled wetlands for development
 - ▣ No land building occurring
 - ▣ Rising sea level
 - ▣ Natural weather events
 - ▣ Saltwater intrusion due to constructing channels for shipping and oil exploration

Are you ready to help

- Support CWPPRA Project
- Spread the word
- Educate everyone you see

Ideas

- Ordinance needed to address the amount of development that will be allowed in the coastal areas.
- Borrow Pits
 - How many
 - How close together
 - Requirements

Websites



A Reference Guide

□ Government agencies

▣ Federal

- Army Corps of Engineers www.mvn.usace.army.mil/
- Environmental Protection Agency
www.epa.gov/owow/wetlands/
- Fish & Wildlife Service www.fws.gov/
- NOAA National Marine Fisheries
www.noaa.gov/fisheries.html
- Natural Resources Conservation Service www.nrcs.usda.gov/

□ Government agencies

□ State

- Coastal Protection and Restoration Authority *Louisiana's Comprehensive Master Plan for a Sustainable Coast*
<http://www.lacpra.org/>
- Department of Environmental Quality
<http://www.deq.louisiana.gov/portal/>
- Department of Health and Hospitals Office of Public Health
<http://www.dhh.louisiana.gov/offices/?ID=79>
- Department of Natural Resources <http://dnr.louisiana.gov/crm/> and
CIAP <http://dnr.louisiana.gov/crm/ciap/ciap.asp>
- Department of Wildlife and Fisheries <http://www.wlf.louisiana.gov/>
- Governor's Office of Coastal Activities <http://www.goca.state.la.us/>
- LSU AgCenter <http://www.lsuagcenter.com/>

□ Government agencies

□ Local

- Orleans Local Coastal Program www.cityofno.com/
- Sewerage and Water Board of New Orleans Wetlands
Assimilation Project www.swbno.org/

□ Non government organizations

- America's Wetland www.americaswetland.com/
- Barataria-Terrebonne National Estuary Program
www.btnep.org
- Coalition to Restore Coastal Louisiana www.crcl.org
- Gulf Restoration Network www.healthygulf.org

□ Non government agencies (con't)

- Lake Pontchartrain Basin Foundation www.saveourlake.org
- Louisiana Disaster and Recovery Foundation *GreenOLA*
<http://louisianahelp.org/documents/greenolawithldrfcoverpage.pdf>
- Louisiana Wildlife Federation www.lawildlifefed.org/
- Lower Ninth Ward Center for Sustainable Engagement and Development <http://www.helpholycross.org/>
- Sierra Club <http://louisiana.sierraclub.org/neworleans/>

Credits



- MRGO Must Go Coalition- www.MRGOmustGO.org
- Heather Szpary LLC
- HDR

CONTACT INFORMATION

Wynecta Fisher

504-658-4074

wmfisher@cityofno.com